

My favorite Unicode character:
the zero-width joiner!

!!Con 2016

Character - a [...] symbol represented by sequence of one or more bytes.

-- <http://www.ietf.org/rfc/rfc2130.txt>

Glyphs [...] are the particular images representing a character or part of a character.

-- <http://www.unicode.org/reports/tr17/#CharactersVsGlyphs>

ଠ
ଠ

ଠ^୫ + ZWJ + ଠ

ت

ZWJ + ت + ZWJ



👩 + ZWJ + ❤️ + ZWJ + 👩



typewriter character balls

e = and

è = is

Code Page 01047

USASCII code chart

b7 b6 b5 b4 b3 b2 b1					Column																
Bits					Row	0	1	2	3	4	5	6	7								
0	0	0	0	0	0	NUL	DLE	SP	0	@	P	\	p								
0	0	0	0	1	1	SOH	DC1	!	1	A	Q	a	q								
0	0	0	1	0	2	STX	DC2	"	2	B	R	b	r								
0	0	0	1	1	3	ETX	DC3	#	3	C	S	c	s								
0	1	0	0	0	4	EOT	DC4	\$	4	D	T	d	t								
0	1	0	0	1	5	ENQ	NAK	%	5	E	U	e	u								
0	1	0	1	0	6	ACK	SYN	&	6	F	V	f	v								
0	1	0	1	1	7	BEL	ETB	'	7	G	W	g	w								
1	0	0	0	0	8	BS	CAN	(8	H	X	h	x								
1	0	0	0	1	9	HT	EM)	9	I	Y	i	y								
1	0	0	1	0	10	LF	SUB	*	:	J	Z	j	z								
1	0	0	1	1	11	VT	ESC	+	;	K	[k	{								
1	1	0	0	0	12	FF	FS	,	<	L	\	l									
1	1	0	0	1	13	CR	GS	-	=	M]	m	}								
1	1	0	1	0	14	SO	RS	.	>	N	^	n	~								
1	1	1	1	1	15	SI	US	/	?	O	_	o	DEL								

ASCII

HEX DIGITS	4-	5-	6-	7-	8-	9-	A-	B-	C-	D-	E-	F-	
0	SP SPO10000	& SM020000	- SP100000	ø LO010000	Ø LO620000	° SM190000	μ SM170000	¬ SM090000	{ SM110000	}	\ SM070000	0 ND100000	
1	RSF SP030000	é LE110000	/ SP120000	Ê LE120000	a LA010000	j LI010000	~ SD190000	£ SC030000	A LA030000	J LI020000	÷ SA060000	1 ND010000	
2	â LA110000	ê LE150000	Â LA100000	Ê LE160000	b LB010000	k LK010000	s LS010000	¥ SC030000	B LB020000	K LK200000	S LS020000	2 ND030000	
3	ã LA170000	ë LE170000	Ã LA180000	Ë LE180000	c LC010000	l LL010000	ı LT010000	• SD030000	C LC020000	L LK200000	T LT020000	3 ND030000	
4	ä LA130000	è LE130000	Ä LA140000	Ë LE140000	d LD010000	m LM010000	u LU010000	© SM030000	D LD020000	M LM200000	U LU020000	4 ND040000	
5	á LA110000	í LI100000	Á LA120000	Ï LI200000	e LE010000	n LN010000	v LV010000	§ SM040000	E LB020000	N LV020000	V LV200000	5 ND050000	
6	ã LA190000	î LI100000	Ã LA200000	Ï LI010000	f LF010000	w LW010000	¶ SM050000	¶ LF020000	F LF020000	O LW020000	W LW200000	6 ND060000	
7	â LA270000	ï LI010000	Ä LA280000	Ï LI800000	g LG010000	p LP010000	x LX010000	¼ NF040000	G LG020000	P LP020000	X LX020000	7 ND070000	
8	ç LC040000	ì LI130000	Ç LC020000	Ï LH010000	h LH010000	q LQ010000	y LY010000	½ NF010000	H LQ020000	Q LY020000	Y LY200000	8 ND080000	
9	ñ LN190000	β LS010000	Ñ LN200000	ı SD130000	i LI010000	r LR010000	z LZ010000	¾ NF030000	I LN020000	R LR020000	Z LZ020000	9 ND090000	
A	é SC040000	ı SP020000	ı SM050000	ı SP130000	ı SP170000	ı SM210000	ı SP030000	ı LY120000	ı SM170000	ı SP120000	ı ND010000	ı ND020000	ı ND030000
B	ı SP110000	ı SC030000	ı SP080000	ı SM010000	ı SP180000	ı SM200000	ı SP160000	ı SD170000	ı LO150000	ı LU150000	ı LO160000	ı LU160000	
C	< SA090000	* SM040000	% SM020000	@ SM030000	ø LD050000	æ LA010000	Ð LD030000	- SM150000	ø LO170000	ü LI070000	Û LO180000	Ü LU180000	
D	(SP060000	ı SP070000	ı SP090000	ı SP050000	ı LY110000	ı SD410000	ı SM060000	ı SM090000	ı LO130000	ı LU130000	ı LO140000	ı LU140000	
E	+ SA010000	ı SP140000	> SA050000	ı SA040000	ı LT030000	ı LA030000	ı LT040000	ı SD110000	ı LO110000	ı LU110000	ı LO120000	ı LU120000	
F	SM130000	ı SD150000	? SP150000	ı SP040000	ı SA020000	ı SC010000	ı SM030000	ı SA070000	ı LO190000	ı LY170000	ı LO200000	ı LO210000	

EBCDIC

`iconv --list`

With Unicode, the information technology industry has replaced proliferating character sets with data stability, global interoperability and data interchange, simplified software, and reduced development costs.

-- <http://www.unicode.org/versions/Unicode8.0.0/ch01.pdf>

ZWJ + ت + ZWJ = ت

ZWJ + ت = ت

ت + ZWJ = ت

$$\text{ವ್} + \text{ವ} = \text{ವ್ವ}$$

$$\text{ವ್} + \text{ZWNJ} + \text{ವ} = \text{ವ್‌ವ}$$

 + ZWJ +  + ZWJ +  = 

anne@anne ~ \$ python

```
>>> len("👉❤👉")
```

```
anne@anne ~ $ python
```

```
>>> len("👉💖👈")
```

```
20
```

```
\xf0\x9f\x91\xa9\xe2\x80\x8d\xe2\x9d\xa4  
\xef\xb8\x8f\xe2\x80\x8d\xf0\x9f\x91\xa9
```

```
anne@anne ~ $ python3
```

```
>>> len("👉❤👈")
```

```
anne@anne ~ $ python3
```

```
>>> len("👉❤👉")
```

```
6
```

```
\U0001f469\u200d\u2764\u200d\U0001f469
```

```
anne@anne ~ $ java ZWJ
```

```
“👩❤️👩”.length() // returns ???
```



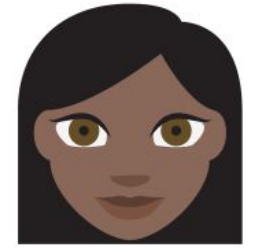
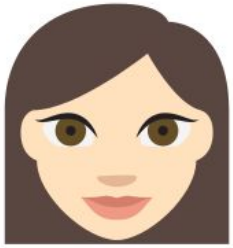
```
anne@anne ~ $ java ZWJ
```

```
“👩❤️👩”.length() // returns 8
```

```
anne@anne ~ $ java ZWJ
```

```
“👩❤️👩”.length() // returns 8
```

```
“👩❤️👩”.codePointCount() // returns 6
```





1991



2016

My Pebble, on my wrist

Emoji sequence for 🍷💕🍷



4 people in our family =

len()????

